



RX-3LITE v2

BODY WORN CAMERA

Introduction

Thank you for purchasing the RX3-Lite v2 professional body-worn CCTV camera system. This guide details how to operate, configure and download data from the RX3-Lite v2 camera. Please keep this guide for future reference.

Charging

The camera should only be charged using the cable and charger supplied with your camera. We recommend charging the camera using the supplied charging dock. To charge the camera place the unit into the charging dock with the USB cable and plug connected. The charging status LED will come on the green while charging and charge to white once fully charged.

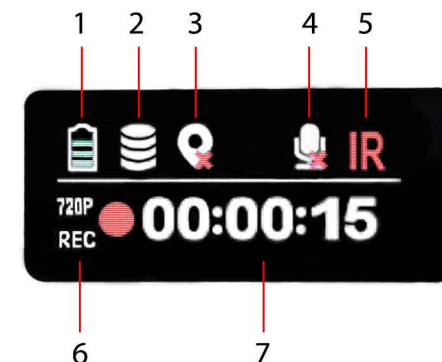
A full charge can take up to 5 hours depending on the camera's batteries current charge state.

Note - It is recommended to charge the camera before use and long periods of storage.



1.LCD Status Screen.

- 1.Battery Status-
- 2.Memory Status
- 3.GPS Status
- 4.Silent Mode enabled
- 5.IR Night-vision enabled
- 6.Recording Resolution
- 7.Time & Date/Record Status



2.Charging Data Sync Dock Connections.

3.Night Vision LEDs. Infra-red night vision LEDs for operation of the camera in low light conditions.

4.Camera Lens. Wide angle full HD camera lens

5.Light Sensor. Used to automatically enable night-vision in low light levels.

6.Charging Status LED. Blue: Charging, White: Fully Charged

7.Operation Status LED.

Solid Green: Standby. (switched on and ready to record).

Solid Red: Pre-record mode active

Flashing Red: Video recording in progress.

8.Record Button.

Start Recording: Press Once.

Stop Recording: Press and hold for 3 seconds.

Switch on and Record: Press and hold while switched off.

9.Snapshot Button.

Capture Still Image: Press Once.

Enable/Disable Covert Mode: Press and hold for 3 seconds.

10.USB Port & Reset Button.

USB socket for charging and downloading recorded data from the camera without the need of the dock.

Only use the official cable supplied with the Body Worn Camera.

11.FN Button

Press Once: To activate/deactivate Infra-red night vision when set to manual mode.

Press Twice: To activate/deactivate silent operation mode.

12.Power Button

To switch the camera on or off press and hold for 3 seconds.

Audible Voice Alerts

The camera is able to give audible alerts for the following scenarios

Recording Started
Recording Stopped
Low Battery
Full Memory

These can be enabled/disabled by pressing the FN button twice.

Device Reset.

In the unlikely event your camera becomes unresponsive please perform a device reset by gently pressing the camera's reset button found under the tracker's USB socket on the side of the camera. The reset button should be pressed with a thin blunt tool for 3-5 seconds and then released. The camera will switch off now press the power switch for 3 seconds to switch the camera back on again.



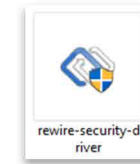
Software Installation

The latest version of the software for the RX3-Lite v2 is available on www.re-wiresecurity.co.uk/download. Navigate through the downloads menu and find 'Digital Evidence Management Software'. Once downloaded, extract the re-wiresecurity.exe file on to your computer's desktop. Once done, follow the steps below to install the camera software.

Note: The RX3-Lite v2 is not Mac compatible



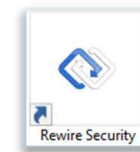
1. Double click the newly downloaded rewiresecurity.exe installation file to start the camera software installation.



2. The application installer will check if the necessary framework is installed on your computer. If you are prompted to install 'NET Framework' please install it before you proceed with the camera install installation. The installation can take a few minutes. Once complete, please rerun the rewiresecurity.exe to proceed.

3. If prompted about an 'unknown application' click Yes/Ok to continue. The camera software will be automatically installed on your system.

You can find a shortcut to the application on your desktop.

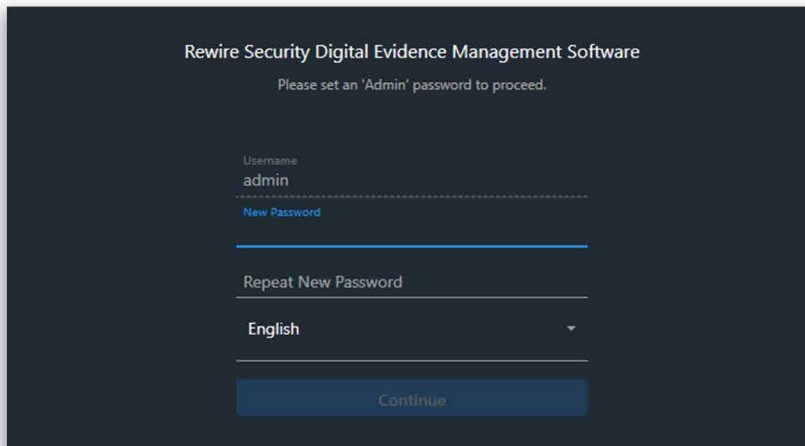


Downloading Data & Configuration

To download recorded data and configure the RX3-Lite body worn camera please follow the steps below.

1. Connect the camera to your computer while switched OFF using the supplied dock and USB cable.
Once connected, the camera will switch on and play a start-up tone.

2. Open the 'Rewire Security' software, the software will detect the camera and then you'll be asked to create a password for your Rewire Security software account.



Rewire Security Digital Evidence Management Software

Please set an 'Admin' password to proceed.

Username
admin

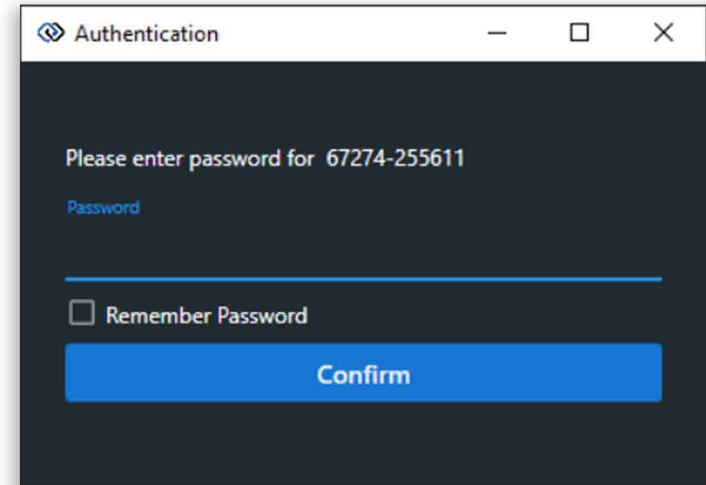
New Password

Repeat New Password

English

Continue

3. You will be prompted to enter the camera's password. The default password is 000000. Once entered, click 'login'



Authentication

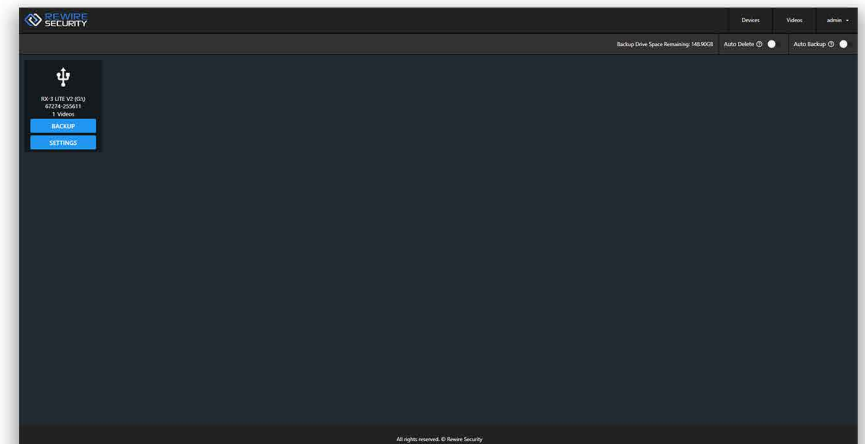
Please enter password for 67274-255611

Password

Remember Password

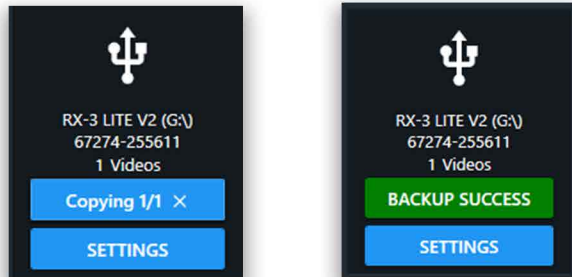
Confirm

4. Once logged in, you will be able to access the dashboard which shows the camera connected, it's media storage and settings.

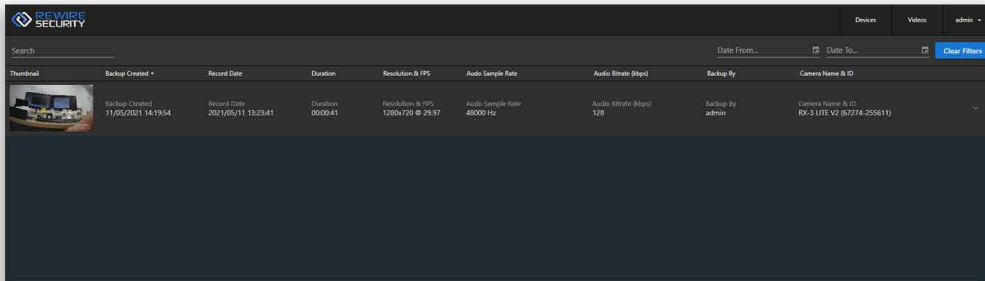


Downloading Data & Configuration

5. To view the camera media, you will need to first backup the media onto your Rewire Security software by pressing 'Backup'. Once this has completed, a message will display 'Backup Success'.



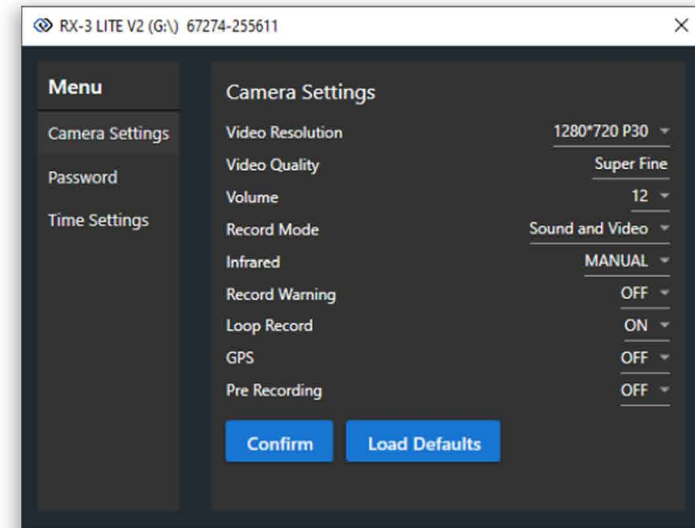
6. Next, to access the backed up media, click on the 'Videos' tab in the top right of the page. This will show you all media. From here you can edit, export and manage your footage.



You can access the device settings by click on 'Settings' of the connected device on the device page. You will be prompted to disconnect the device for 5 seconds and reconnect in order to access configuration mode.

Please disconnect the USB cable from the camera. wait 5 seconds then reconnect!

7. Once you have done this, you will be greeted by the settings menu for the connected device. Here you can access the camera settings, time settings and change the password of the device.



Video Resolution: Set the video resolution the camera records in

Video Quality: Set the sharpnes of the recorded video.

Volume: Set the volume of the camera internal speaker.

Record Mode: Select the type of recording, Sound + Video or Video only

Infrared: Toggle between automatic and manual infared

Record Warning: Turn ON/OFF audible alerts for recording.

Loop Record: Turn on loop record to allow the camera to overwrite recordings when full.

GPS/Glonass: Turn ON/OFF GPS location logging.

Video Split Time: Set the time for how often the camera splits video files during continous recording

Time Zone: Set the GMT time zone the camera is being used in. Example: Time Zone 1 for British summer time.

Pre Recording: Set camera to consantly record in segments, record button saves last segment

Once finished, click 'Save and Exit' to save changes or 'Exit' to close without

Specifications

Recording Quality: 1440P, 1080P, 720P, 480P (H.265, MPEG4)

Casing: Toughened ABS Plastic casing, Weatherproof IP65 Rated

Memory: 32GB Built-in (Anti Tamper)

File Split Time: Adjustable Between 3, 5, 10, 15, 30 minutes

Recording time: 480P 13-14 hours

720P 8 - 9 hours

1080P 5 - 6 hours

Charge time: 4 - 6 hours

Connectivity: USB 2.0 (Data Download & Charging)

Working temperature: -10°C - +60°C @ max 95% humidity (non condensing)

Dimensions: 75mm x 55mm x 22mm

Weight: 125G

Compliance: CE, RoHs

Mount Options: Klickfast Dock Ready, Rotating Spring Loaded Clip. Klickfast Garment Mount (Included)

Other Features: Time & Date Stamp, Device ID, GPS coordinates embedded into Video. Vibration Feedback, Audio Feedback, Record Indicator, One Touch Record From OFF, Custom Camera ID, User ID, GPS logging.

Notes of use

Always safely eject the camera before disconnecting from Computer.

Always download and backup data between uses.

Never place the camera on or near strong magnetic fields.